

New Build Offices



• To Let **2,112m² (22,734 ft²)**



Wavertree Technology Park **Liverpool**

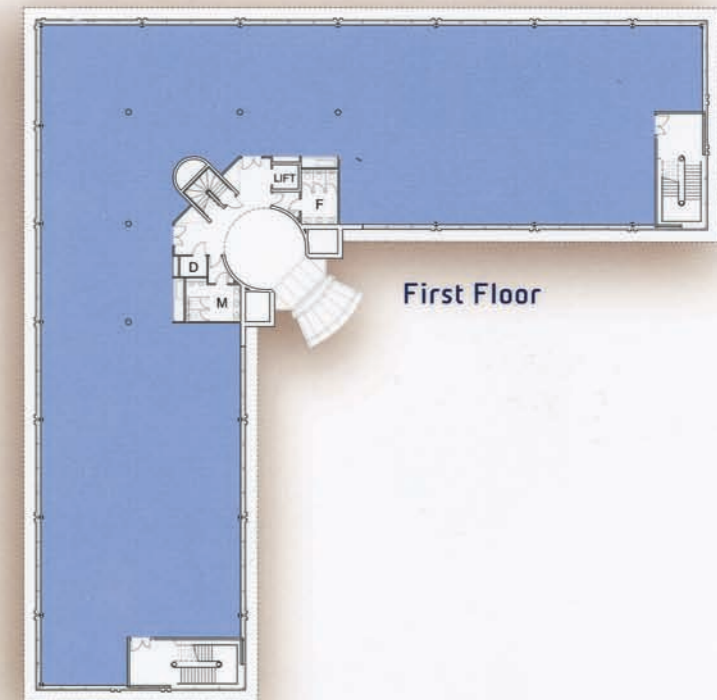
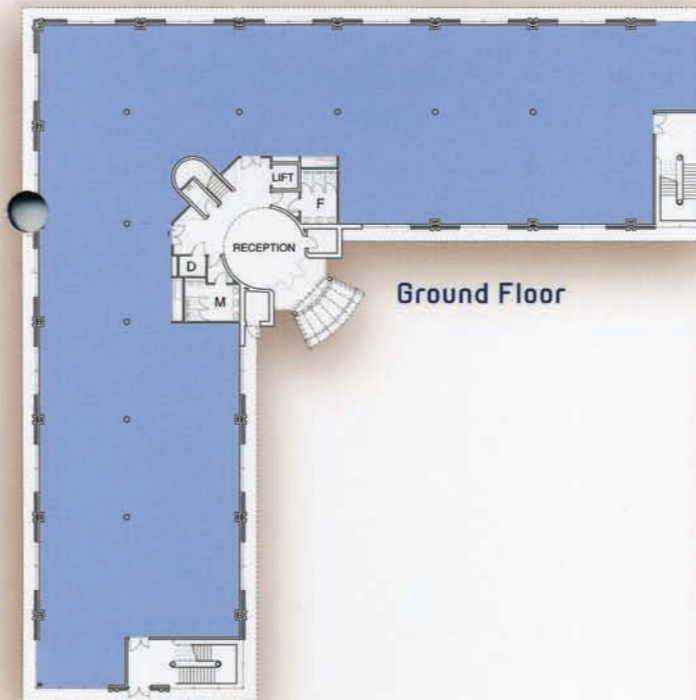
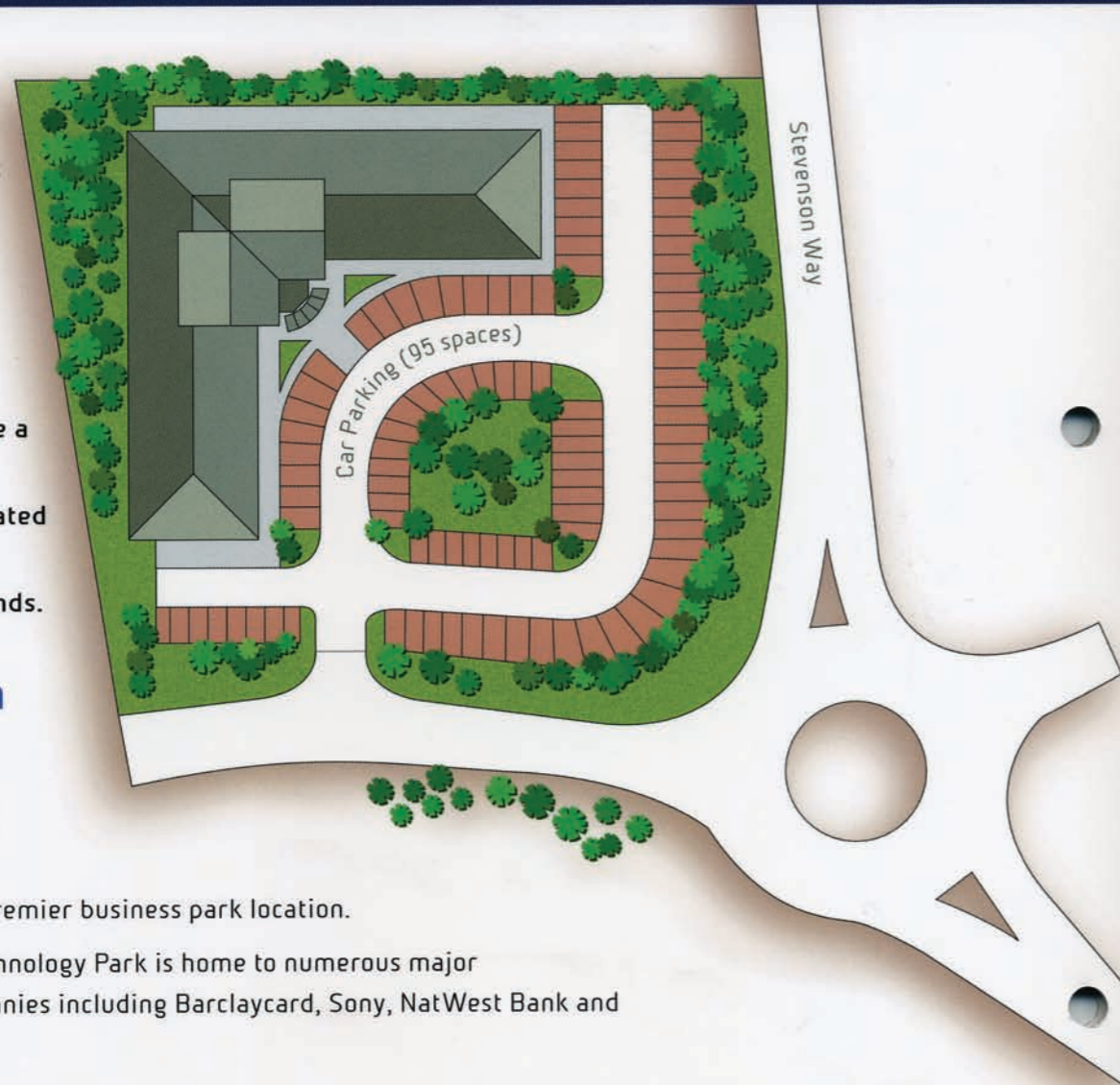
- Prestigious entrance foyer.
- Displacement ventilation / cooling.
- Raised floors.

- Car parking ratio of 1 space/240ft².
- Suspended ceiling with category II lighting.
- Double glazed tinted, anodised aluminium windows.

The development will occupy a prominent site on Wavertree Technology Park opposite Sony, and will comprise a landmark office development located in high quality landscaped grounds.

Floor area
2,112m²
(22,734ft²)

- Merseyside's premier business park location.
- Wavertree Technology Park is home to numerous major national companies including Barclaycard, Sony, NatWest Bank and GEC Marconi.
- Situated in close proximity to Edge Lane (A5407) the main arterial route linking Liverpool city centre (2 miles) with the M62 (1 mile).
- Excellent public transport links.
- Financial assistance available.

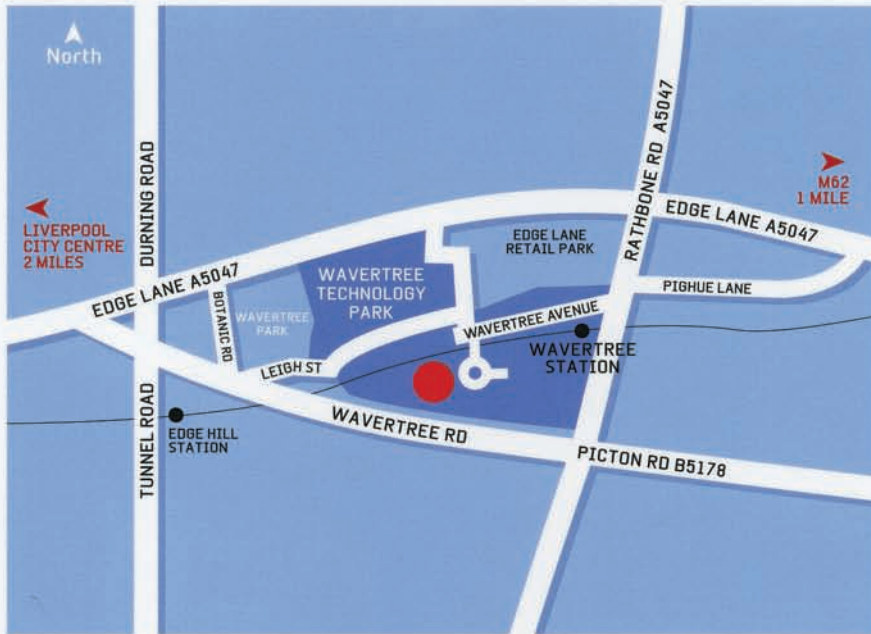


Wavertree Technology Park Liverpool

Location Location Location



Railway Station at Wavertree Technology Park



Wavertree Technology Park Occupiers



Sony



GEC Marconi



Barclaycard



Scientific Hospital Supplies

TERMS

The accommodation is available by means of a new fully repairing and insuring lease, terms on application from the joint letting agents.

FINANCIAL ASSISTANCE

The area benefits from the European Objective One Status which provides the most comprehensive financial assistance package currently available to qualifying occupiers in the UK. Further information may be obtained by contacting Liverpool Business Centre on 0151 233 5454.

Letting Agents



A development by



In partnership with



Acquired by



Important note relating to Misrepresentation Act 1967 and Property Misdescriptions Act 1991

Insignia Richard Ellis on their behalf and for the sellers or lessors of this property whose agents they are give notice that: (i) The particulars are set out as a general outline only for the guidance of any intending purchasers or lessees and do not constitute, nor constitute part of an offer or contract. (ii) All descriptions, dimensions references to condition and necessary permissions for use and occupation, and other details are given in good faith and are believed to be correct, but any intending purchasers or tenants should not rely on them as statements or representations of fact, but must satisfy themselves by inspection or otherwise as to the correctness of each of them. (iii) No person employed by Insignia Richard Ellis has any authority to make or give any representation or warranty whatever in relation to this property. VAT All rentals quoted are exclusive of VAT. Date of publication: June 2001